

Series C Conveyor OPTIONAL FEATURES

RAPAT
CORPORATION



HEAVY DUTY BULK HANDLING

For applications that require high capacities or heavy duty conveying, Rapat offers a full line of dual or three roll idler conveyors with formed or structural channel frames.



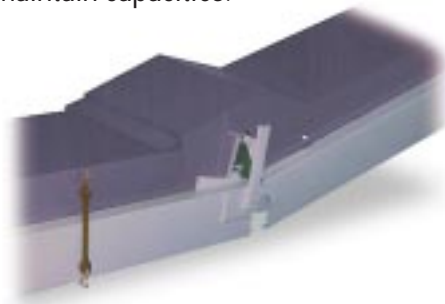
CUSTOM INSTALLATIONS

Rapat's line of conveyors can be tailored to your specific application. Pictured above is the Series C Conveyor with a custom trussed frame designed for loading bulk material into enclosed trailers. As the trailer is loaded, the conveyor retracts back into the warehouse.

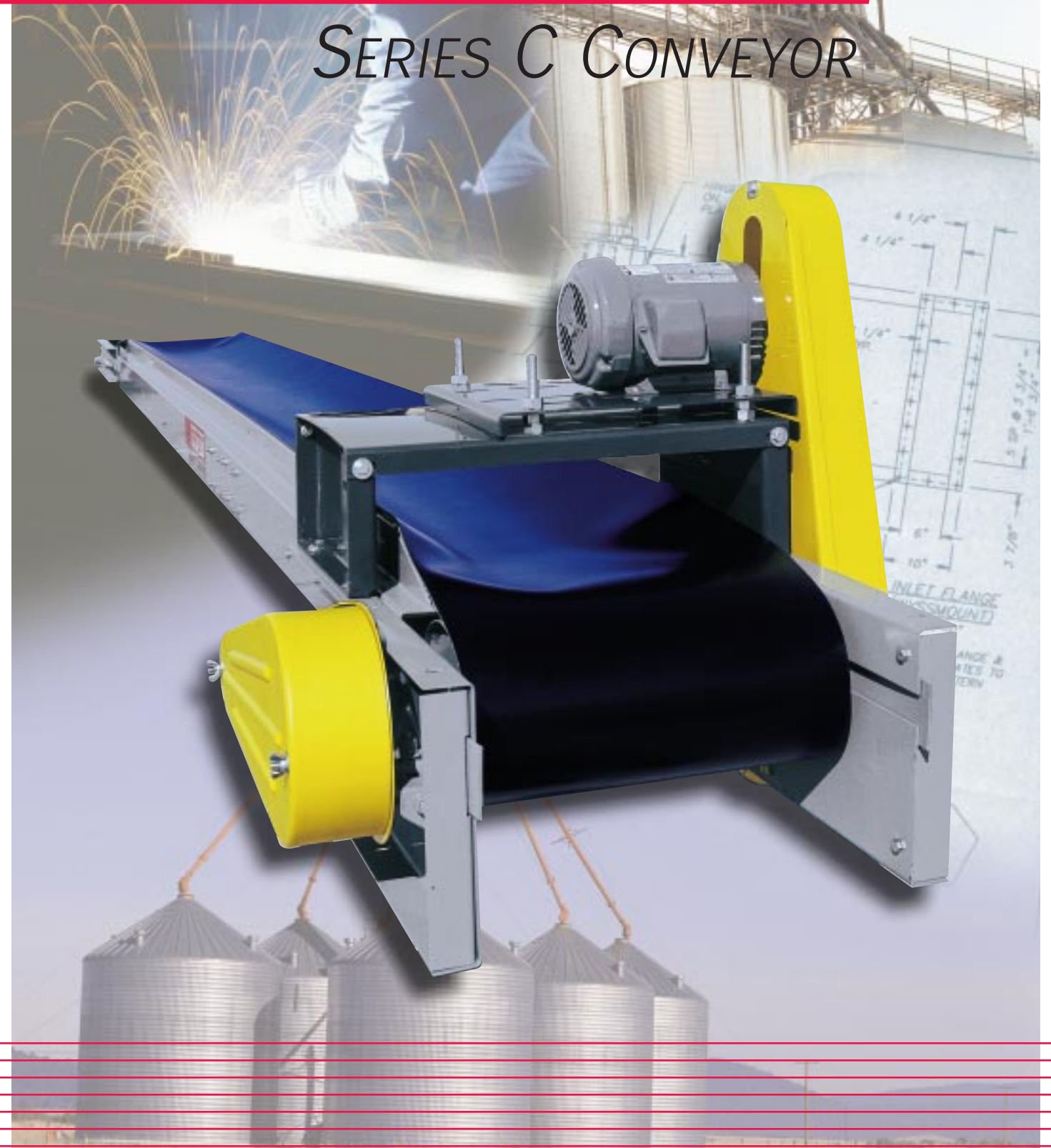
HINGE SECTION

The optional hinge section enables you to convey horizontally for a distance and then incline to another conveyor or other piece of equipment.

When using an incline section, a 6" wider belt is required to maintain capacities.



SERIES C CONVEYOR



RAPAT CORPORATION PRODUCT LINE CARD

CONVEYORS

- ENCLOSED BELT
- BAGGING
- CLEATED BELT
- TRUCK & RAILCAR UNLOADERS
- FLEXIBLE SIDEWALL
- PORTABLE BELT
- FOOD HANDLING
- TROUGHING ROLLER
- PLASTIC & WIRE BELTS
- SLIDER BED
- STAINLESS STEEL CONSTRUCTION
- EN-MASSE (DRAG)
- CUSTOM CONVEYORS

DISTRIBUTORS

- ROTO-FLO
- ROTARY VALVE
- SWING-FLO

BUCKET ELEVATORS

- COMPLETE BUCKET ELEVATOR ASSEMBLIES
- CUSTOM ACCESSORIES
- BACKLEG ROLL OPTIONS

SCREW CONVEYORS

- TUBE TYPE SCREW CONVEYORS
- AUGER FLIGHTING

ACCESSORIES

- HORIZONTAL UNLOAD POWERHEADS
- 25 DEGREE INCLINE POWERHEADS
- BIN UNLOAD TUBES WITH ROLLER SLIDE GATES
- BANJO SUMP BIN UNLOAD TUBES
- ELECTRIC / HYDRAULIC DRIVE KITS
- HOPPER CAR UNLOADERS
- TRANSFER SPOUTING
- CAST IRON TURNHEADS
- REVERSIBLE ELBOWS
- DRAW OFF SPOUTS

INDUSTRIAL MATERIAL HANDLING SOLUTIONS THAT WORK!

At The Rapat Corporation, we approach each project with the intent of finding a better way to solve our customers' problems by listening to their individual needs, and applying what we learn to best solve their specific material handling requirements.

Put our experience with some of the largest Fortune 500 Corporations to work for you—call toll-free today for more information.

AS SERVICES
VIMAIN AUSTRALASIA

669 WHITEROCK ROAD, BATHURST, NSW, 2795 AUSTRALIA,
PHONE> +61 (0) 438322788
EMAIL> mark@avimain.com.au
WEB> avimain.com

Series C Conveyor FEATURES

DURABLE CONSTRUCTION, QUALITY WORKMANSHIP.

Rapat Series C Conveyors are highly-efficient conveyors designed for permanent installation.

All materials are gently conveyed, eliminating loss due to cracking, grinding and crushing.

MATERIAL VERSATILITY AND COMMON-SENSE DESIGN

Materials conveyed include grain, corn, seed, beans, fertilizer, recyclables, wood chips, sand and nearly any bulk material.

The shape of the frame forms the belt into a trough, and the product rides smoothly on top of the belt. This eliminates damage and spillage and allows easier cleanout of product.

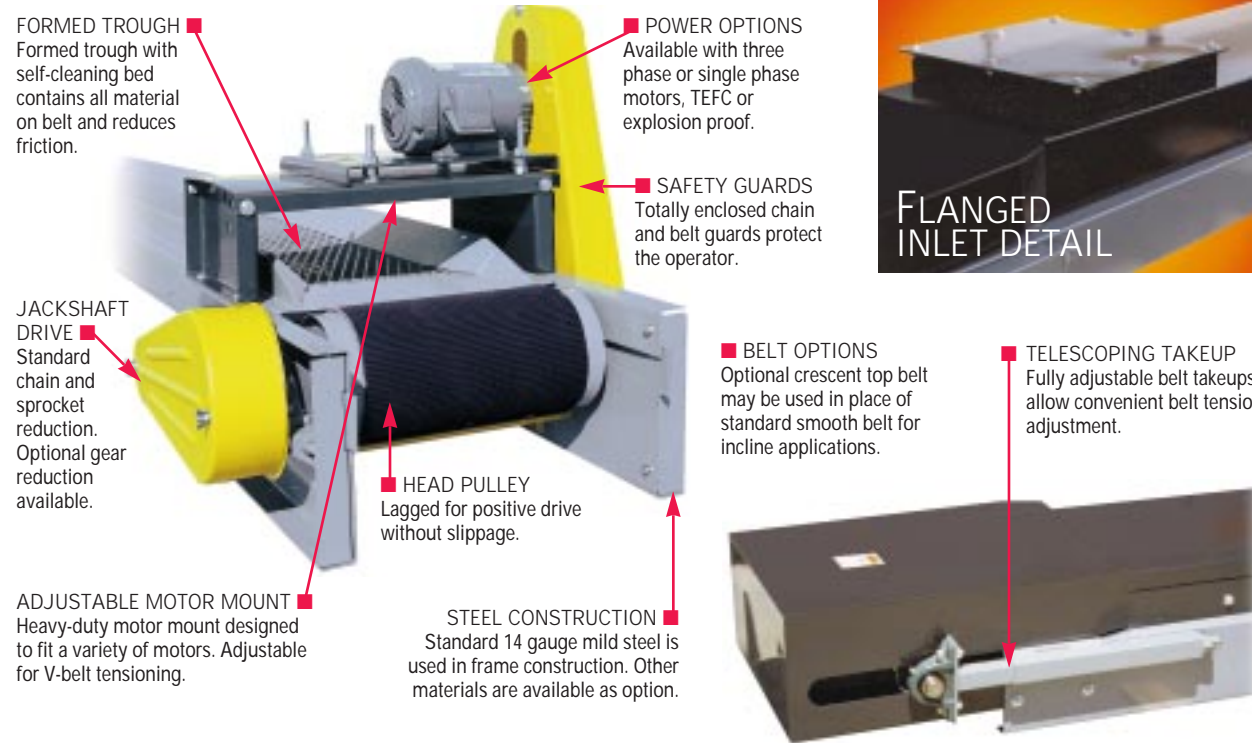
OPTIONS MAKE CUSTOM CONFIGURATIONS EASY

We take pride in our ability to custom configure any of our conveyor systems, and by offering every conceivable option, The Rapat Corporation gives you the most flexible conveyor system available.

SERIES C SPECIFICATIONS

Lengths	5' and 10' modular sections in stock, custom sizes available in any size required.
Belt	Smooth PVC belt with mechanical fastener. Available in a variety of widths.
Drive	V-belt drive with roller chain final drive. Right angle or shaft mounted reducers available.
Frame	Series C Conveyor utilizes a formed and welded trough with self-cleaning expanded metal slider bed.
Power	Can be powered with single phase or three phase electric motors. See horsepower chart.
Pulleys	4" or 8" diameter lagged head with 4" diameter snub and tail pulleys.

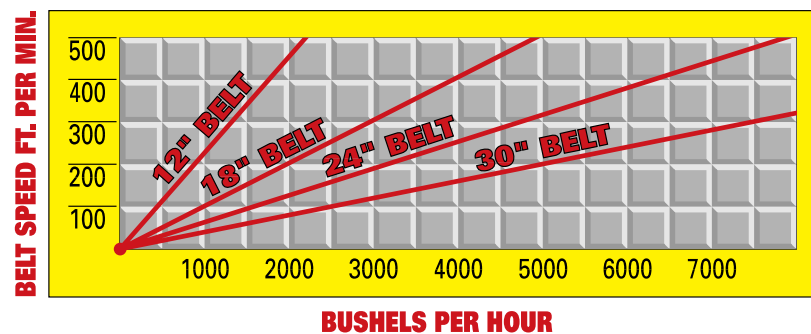
All specifications subject to change without notice.



DURABLE BED DESIGN IS THE HEART OF A RAPAT SERIES C CONVEYOR.

SERIES C CONVEYOR

The Series C Conveyor utilizes a formed trough with a self-cleaning bed. The open bed design reduces friction and prevents dust buildup.



POWER RECOMMENDATION CHART (HP per 10' of horizontal conveyor)

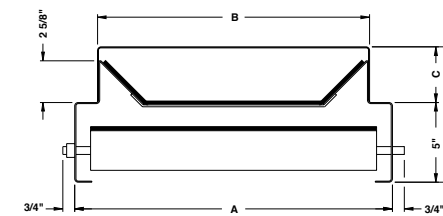
Belt Speed	12"	18"	24"	30"
500	.75	1.25	1.75	2.75
400	.6	1.0	1.4	2.25
300	.45	.75	1.05	1.7
200	.3	.5	.7	1.25
100	.15	.25	.5	.75

Note: Add .05 HP per 1,000 Bu Hr per foot rise for inclined conveying



SERIES C CONVEYOR

The Rapat Series C Belt Conveyor is an economical, low maintenance conveyor for handling bulk product. The troughed, open-bed design eliminates material build-up under the belt, reducing friction and eliminating the need for multiple bed rollers.



BELT WIDTH	A	B	C		D	
			4" Drive Pulley	8" Drive Pulley	4" Drive Pulley	8" Drive Pulley
12"	14"	11"	3 1/2"	3 1/2"	8 1/2"	8 1/2"
18"	20"	17"	3 1/2"	3 1/2"	8 1/2"	8 1/2"
24"	26"	23"	3 1/2"	3 1/2"	8 1/2"	8 1/2"
30"	32"	29"	3 1/2"	5"	8 1/2"	10"
36"	38"	35"	3 1/2"	5"	8 1/2"	10"

SERIES C OPTIONS

- FLANGED INLET** - Complete with skirtboard rubber, assures proper flow of material onto the belt.
- DISCHARGE SPOUT** - Designed for easy transfer of material from Series C Conveyors to controlled openings such as bucket elevators or another conveyor.
- TOP COVERS** - Protects the belt and your product from the elements. Also provides minor dust control.
- CRESCENT TOP BELT** - For incline application up to 20 or 25 degrees, depending on product handled.
- HINGE SECTION** - Belt is held down at it's outer edges with transition wheels. Please use next larger belt width to achieve desired capacity.
- RUBBER LINED HOPPER OR SPOUT** - Used for the gentle transfer of materials to and from the Series C.
- GEAR REDUCER DRIVE** - Right-angle gear reducer with roller chain final drive (C face motor required) or shaft mounted gear reducer (foot mount motor required). For heavy-use operations, or applications requiring a slow belt speed.
- TRUSSED FRAMEWORK** - Lattice type framework welded to main conveyor frame. For applications where long spans are required between supports.
- HIGH CLEARANCE PACKAGE** - Used for bulky or large products such as earcorn, recyclables, etc. Consists of high sides or covers, open throat inlet hopper and raised motor mount. Clearances are designed to fit your specific application.
- FULL LENGTH SKIRTING** - Ensures proper flow of material onto belt throughout multiple inlets.
- TRIPPER** - Movable along conveyor via manual or electric winch, discharges product off one side of the conveyor.
- SLINGER** - A 5' conveyor moving along the conveyor within the tripper, discharges product off both sides of the conveyor.

